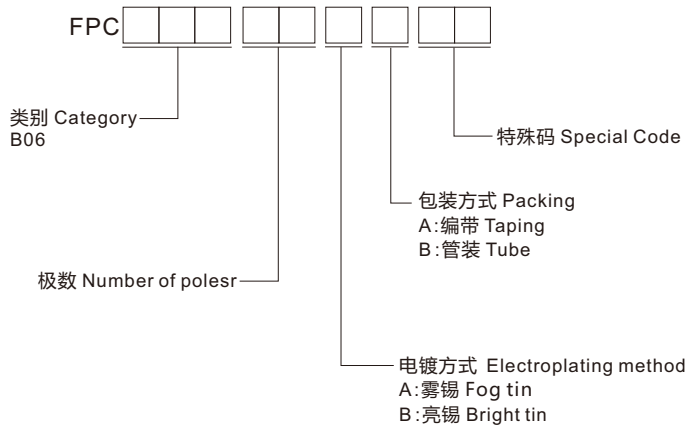


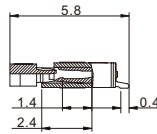
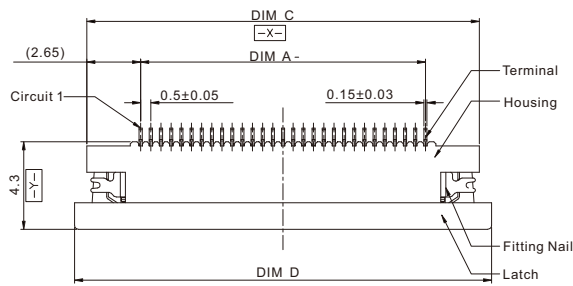


## ◆ 选型 Type Selection



## ◆ 图表 Diagram

■ 0.5拉拔下接H=1.2

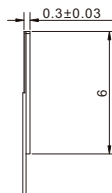
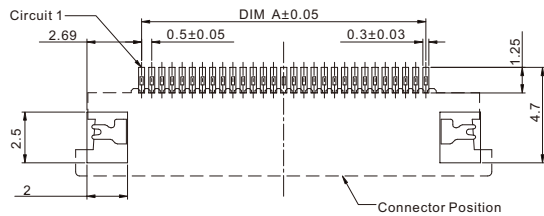
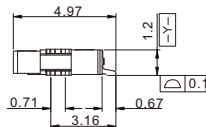
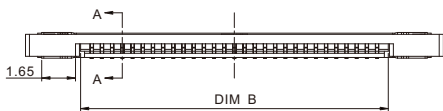


## ◆ 规格 Specifications

- 极数 Number of poles: 4~60
- 工作温度 Working Temperature: -40°C~+85°C
- 额定电压 (最大) Voltage rating(max): 1250V,AC
- 接触电阻 Contact resistance:  $\leq 0.02\Omega$
- 绝缘电阻 Insulation resistance:  $\geq 100M\Omega$
- 目前评级 Current rating: 1.0A
- 耐压 Withstand voltage: 250VAC(rms)

## ◆ 材质 Material

- 端子 Terminal: 铜合金 Copper Alloy
- 外壳 Housing: LCP



CKTS	尺寸 Size(mm)			
	DIM A	DIM B	DIM C	DIM D
4	1.50	2.60	6.80	8.00
5	2.00	3.10	7.30	8.50
6	2.50	3.60	7.80	9.00
7	3.00	4.10	8.30	9.50
8	3.50	4.60	8.80	10.00
9	4.00	5.10	9.30	10.50
10	4.50	5.60	9.80	11.00
.....	.....	.....	.....	.....

