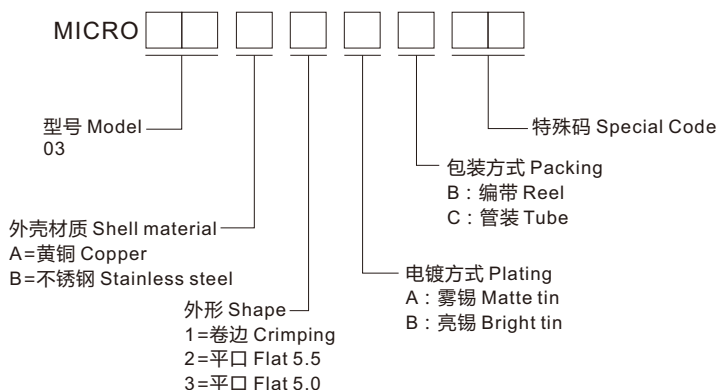




◆ 选型 Type Selection



◆ 规格 Specifications

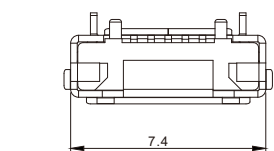
- 电流额定值 Current rating : 1A Max
- 电介质耐电压, 交流100V, 持续1分钟
Dielectric withstanding voltage, AC 100V for 1min
- 接触阻力 Contact resistance : 最大30米 30mΩ Max
- 绝缘电阻 Insulation resistance : 100米/分100MΩ/ Min
- 总交配力 Total mating force : 最大3.57 kgf3.57Kgf Max
- 总脱配力 Total unmating force :
1.0 kgf/min, 0.81~2.05 kgf/min, 经10000次插拔循环后
1.0Kgf Min.0.81~2.05Kgf Min.after 10000 insertion/extraction cycles
- 温度范围 Temperature range : -30°C ~ 80 °C

◆ 材质 Material

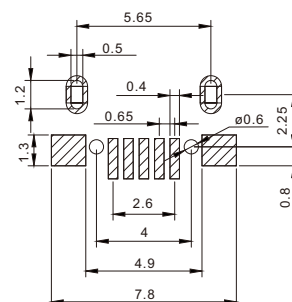
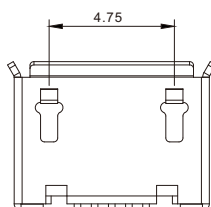
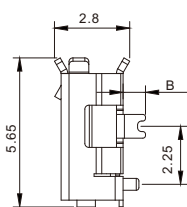
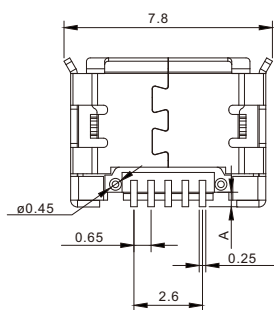
- 端子 Terminal : 铜合金 Copper Alloy
- 本体 Ontology : LCP UL94V-0

◆ 图 表 Diagram

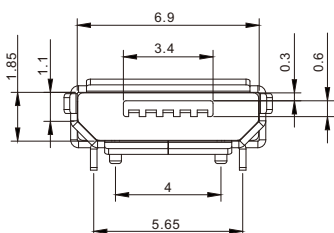
■ 03A1 (5.9卷边有柱)



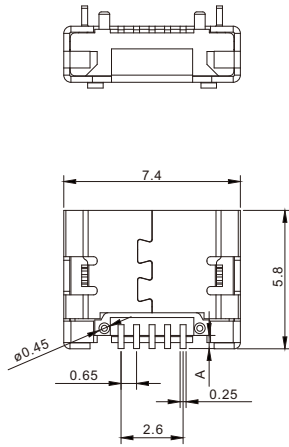
A	L=0.85	B	H=0.90
A	L=1.25	B	H=1.30
		B	H=1.60



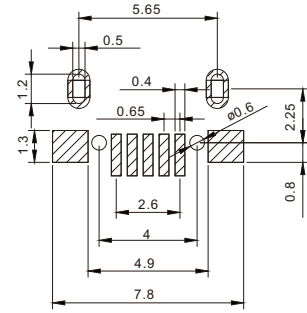
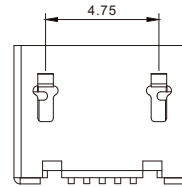
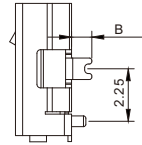
安装图
instructions



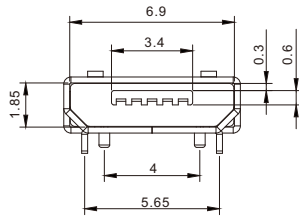
■ 03A2 (5.9平口5.5有柱)



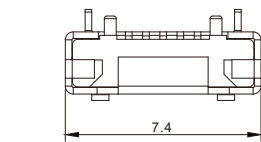
A	L=0.85	B	H=0.90
A	L=1.25	B	H=1.30
		B	H=1.60



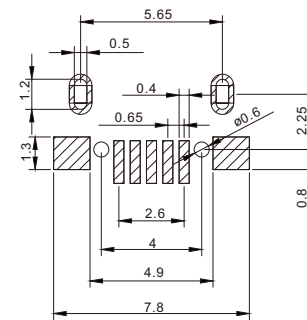
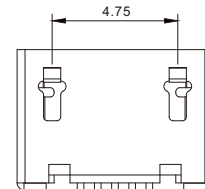
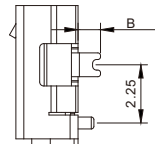
安装图
instructions



■ 03A3 (5.9平口5.0有柱)



		B	H=0.60
A	L=1.25	B	H=0.80
A	L=0.85	B	H=1.25
		B	H=1.60



安装图
instructions

