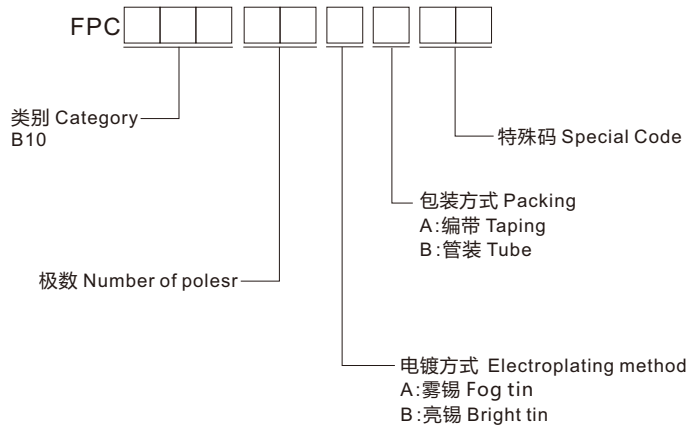
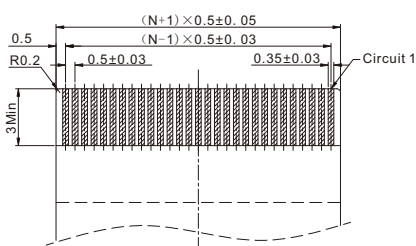
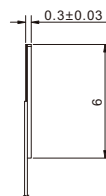
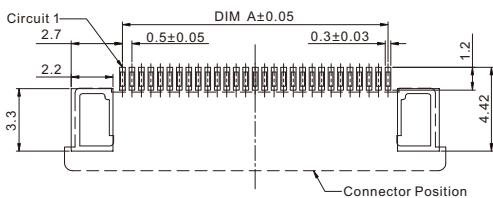
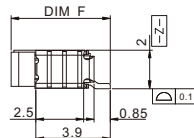
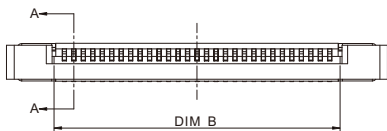
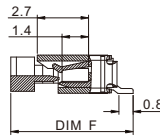
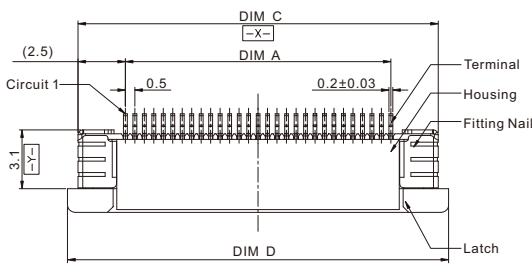


## ◆ 选型 Type Selection



## ◆ 图 表 Diagram

■ 0.5拉拔上接H=2.0



## ◆ 规格 Specifications

- 极数 Number of poles: 4~60
- 工作温度 Working Temperature: -40°C~+85°C
- 额定电压 (最大) Voltage rating(max): 1250V,AC
- 接触电阻 Contact resistance: ≤0.02Ω
- 绝缘电阻 Insulation resistance: ≥100MΩ
- 目前评级 Current rating: 1.0A
- 耐压 Withstand voltage: 250VAC(rms)

## ◆ 材质 Material

- 端子 Terminal: 铜合金 Copper Alloy
- 外壳 Housing: LCP

CKTS	尺寸 Size(mm)					
	DIM A	DIM B	DIM C	DIM D	DIM E	DIM F
4	1.50	2.60	6.50	7.60	5.20	6.45
5	2.00	3.10	7.00	8.10		
6	2.50	3.60	7.50	8.60		
7	3.00	4.10	8.00	9.10		
8	3.50	4.60	8.50	9.60		
9	4.00	5.10	9.00	10.10		
10	4.50	5.60	9.50	10.60		
11	5.00	6.10	10.00	11.10		
12	5.50	6.60	10.50	11.60		
13	6.00	7.10	11.00	12.10		
14	6.50	7.60	11.50	12.60		
15	7.00	8.10	12.00	13.10		
16	7.50	8.60	12.50	13.60		
17	8.00	9.10	13.00	14.10		
18	8.50	9.60	13.50	14.60		
19	9.00	10.10	14.00	15.10		
20	9.50	10.60	14.50	15.60		
21	10.00	11.10	15.00	16.10		
22	10.50	11.60	15.50	16.60		
23	11.00	12.10	16.00	17.10		
24	11.50	12.60	16.50	17.60		
25	12.00	13.10	17.00	18.10		
26	12.50	13.60	17.50	18.60		
27	13.00	14.10	18.00	19.10		
28	13.50	14.60	18.50	19.60		
29	14.00	15.10	19.00	20.10		
30	14.50	15.60	19.50	20.60		
31	15.00	16.10	20.00	21.10		
32	15.50	16.60	20.50	21.60		
33	16.00	17.10	21.00	22.10		
34	16.50	17.60	21.50	22.60		
35	17.00	18.10	22.00	23.10		
36	17.50	18.60	22.50	23.60		
37	18.00	19.10	23.00	24.10		
38	18.50	19.60	23.50	24.60		
.....	.....	.....	.....	5.75	7.00	